

ELOCONE NUTS



You're on the job site and you've come across a little problem with big implications. An anchor rod is just a bit too short to engage the nut, delaying your progress and forcing you to find solutions. The Elocone nut is your answer.

Elocones are elongated nuts that can be used when an anchor rod doesn't project high enough above the concrete foundation to attach a regular nut. By machining a piece of high strength steel into two different sections, this special nut can attach to a shortened anchor rod.

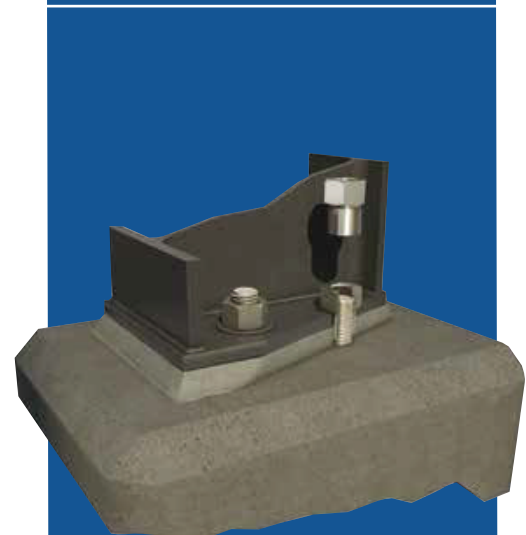


The upper section resembles a standard nut that attaches to the column base or washer plate, while the lower section has a smaller diameter and fits the oversized hole of the base plate to screw on enough threads of the anchor rod.

To develop the tension capacity of an anchor made of steel with a tensile strength of 150 ksi (1,035 MPa), the Elocone nuts must be fastened to the anchor rod for a length equal to the diameter of the rod.



Regular Nut



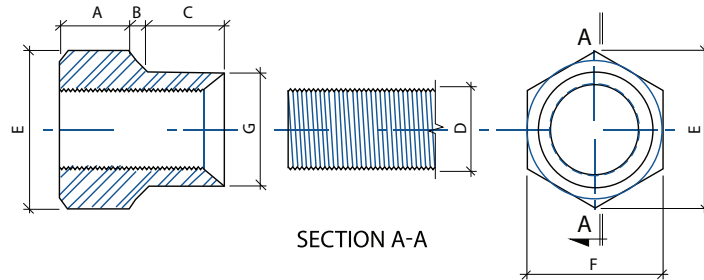
Elocone Nut



Hardness 32-36 HRC
 Elocone Steel Fy = 140 ksi
 (965 MPa) app.

ELOCONE EXTENDED NUTS DIMENSIONS

Elocone nuts are machined pieces with a standard nut head and an elongated lower part that can be screwed to anchor rods within the thickness of the base plate. When special ordered, Elocone nuts can be produced with hot-dip galvanized finish and/or oversized threads. Washers for Elocone nuts are sold separately. Please note that dimensions can change without notice.



Part Number	Anchor Rod Diameter (in.)	Outside diameter of narrow bottom part (in.)	Upper nut length (in.)	Transition length (in.)	Length of narrow bottom part (in.)	Elocone nut overall length (in.)	Dimension across corners of upper nut (in.)	Dimension across flats of upper nut (in.)	Net weight (lbs)	Number of threads per inch and size of threads	Availability
	D	G	A	B	C	A+B+C	E	F			
HBA-0019	0.750	1.000	0.688	0.125	0.688	1.500	1.443	1.250	0.3	10 UNC	Stock
HBA-0041	0.750	1.000	0.688	0.125	1.125	1.938	1.443	1.250	0.4	10 UNC	Order
HBA-0023	0.750	1.000	0.688	0.125	1.438	2.250	1.443	1.250	0.4	10 UNC	Stock
HBA-0040	0.750	1.000	0.688	0.125	2.000	2.813	1.443	1.250	0.5	10 UNC	Order
HBA-0024	0.875	1.180	0.781	0.156	1.000	1.938	1.660	1.438	0.5	9 UNC	Stock
HBA-0020	1.000	1.333	0.917	0.146	1.000	2.063	1.876	1.625	0.7	8 UNC	Stock
HBA-0047	1.000	1.333	0.917	0.146	1.500	2.563	1.876	1.625	0.8	8 UNC	Stock
HBA-0042	1.000	1.333	0.917	0.146	2.000	3.036	1.876	1.625	0.9	8 UNC	Order
HBA-0076	1.000	1.333	0.917	0.146	2.500	3.563	1.876	1.623	1.0	8 UNC	Order
HBA-0027	1.125	1.500	1.000	0.188	1.125	2.313	2.093	1.813	0.9	7 UNC	Stock
HBA-0021	1.250	1.688	1.188	0.188	1.250	2.625	2.309	2.000	1.5	7 UNC	Stock
HBA-0025	1.250	1.688	1.188	0.188	2.250	3.625	2.309	2.000	1.9	7 UNC	Stock
HBA-0026	1.375	1.830	1.233	0.205	1.500	2.938	2.526	2.188	1.7	6 UNC	Stock
HBA-0022	1.500	2.000	1.375	0.188	1.500	3.063	2.742	2.375	2.2	6 UNC	Stock
HBA-0066	1.500	2.000	1.375	0.188	2.000	3.563	2.742	2.375	2.4	6 UNC	Order
HBA-0062	1.750	2.350	1.688	0.178	2.634	4.500	3.125	2.706	5.2	5 UNC	Order
HBA-0049	1.750	2.350	1.688	0.178	4.134	6.000	3.125	2.706	5.2	5 UNC	Order
HBA-0054	2.000	2.690	1.938	0.218	2.345	4.500	3.594	3.125	5.5	4.5 UNC	Order
HBA-0053	2.250	3.020	2.188	0.240	2.573	5.000	4.031	3.500	7.8	4.5 UNC	Order
HBA-0051	2.500	3.360	2.438	0.220	2.843	5.500	4.375	3.800	10.3	4 UNC	Order



For your convenience, there are a few simple ways to learn more or place an order for Elocone nuts.

Visit www.CSCSteelUSA.com
 or call **Jean Paul Sirois** at either **(508) 230-5181** or **(508) 238-4500**.