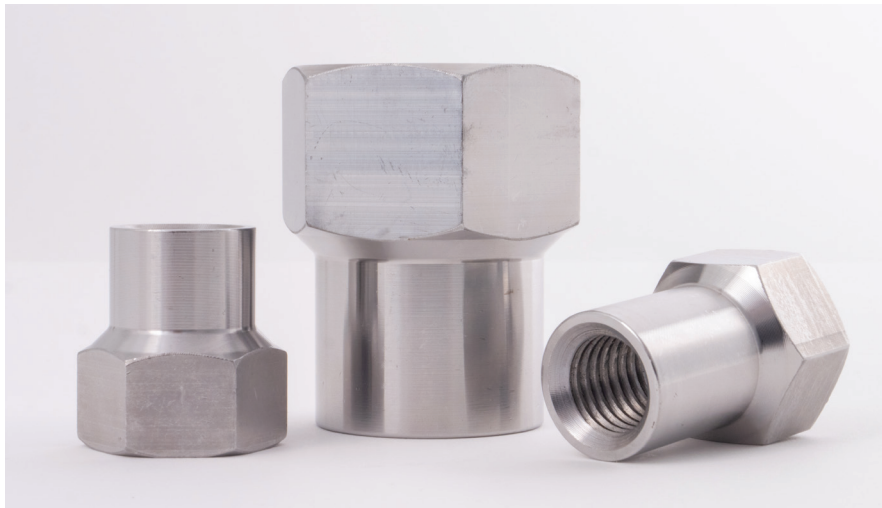


# ANBO-X™ NUTS



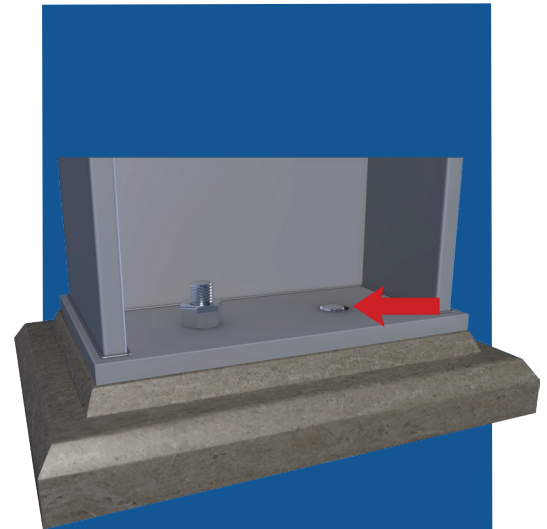
**You're on the job site and you've come across a little problem with big implications. An anchor bolt is just a bit too short to engage the nut, delaying your progress and forcing you to find solutions. The Anbo-X nut is your answer.**

Anbo-Xs are elongated nuts that can be used when an anchor bolt doesn't project high enough above the concrete foundation to attach a regular nut. By machining a piece of high strength steel into two different sections, this special nut can attach to a shortened anchor bolt.

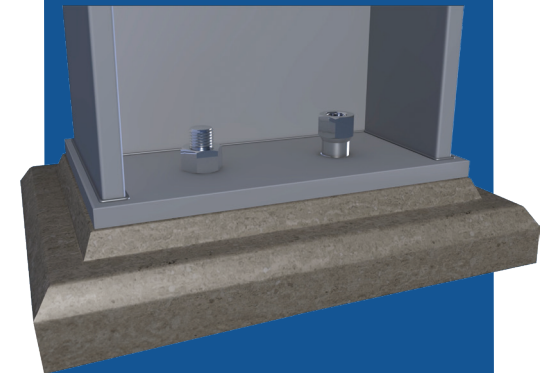


The upper section resembles a standard nut that attaches to the column base or washer plate, while the lower section has a smaller diameter and fits through the oversized hole of the base plate to engage the threads of the anchor bolt.

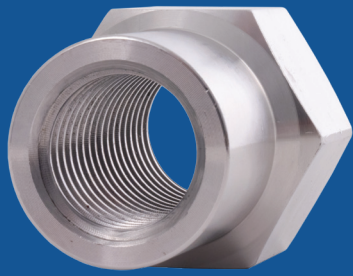
To develop the tension capacity of an anchor made of steel with a tensile strength of 150 ksi (1,035 MPa), the Anbo-X nuts must be fastened to the anchor bolt for a length equal to the diameter of the bolt.



**WHEN ANCHOR BOLTS ARE TOO SHORT TO ENGAGE A STANDARD NUT CORRECTLY,**



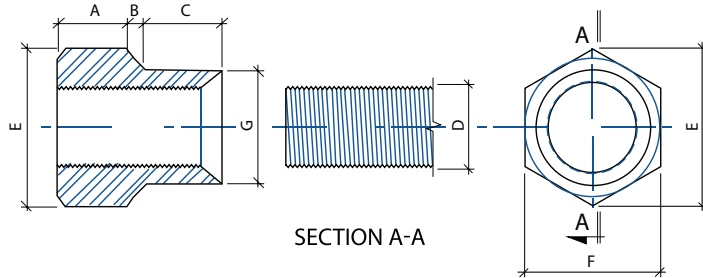
**ELONGATED ANBO-X NUTS FIT INTO THE BASE PLATE AND SECURELY ATTACH TO THE THREADS.**



Hardness 32-36 HRC  
Anbo-X Steel Fy = 140 ksi  
(965 MPa) app.

## ANBO-X EXTENDED NUTS DIMENSIONS

Anbo-X nuts are machined pieces with a standard nut head and an elongated lower part that can be screwed to anchor bolts within the thickness of the base plate. When special ordered, Anbo-X nuts can be produced with oversized threads. Washers for Anbo-X nuts are sold separately. Please note that dimensions can change without notice.



Part Number	Anchor Bolt Diameter (in.)	Outside diameter of narrow bottom part (in.)	Upper nut length (in.)	Transition length (in.)	Length of narrow bottom part (in.)	Anbo-X nut overall length (in.)	Dimension across corners of upper nut (in.)	Dimension across flats of upper nut (in.)	Net weight (lbs)	Number of threads per inch and size of threads
	D	G	A	B	C	A+B+C	E	F		
ABX-07506	0.750	1.000	0.688	0.125	0.688	1.500	1.443	1.250	0.3	10 UNC
ABX-07511	0.750	1.000	0.688	0.125	1.125	1.938	1.443	1.250	0.4	10 UNC
ABX-07514	0.750	1.000	0.688	0.125	1.438	2.250	1.443	1.250	0.4	10 UNC
ABX-07520	0.750	1.000	0.688	0.125	2.000	2.813	1.443	1.250	0.5	10 UNC
ABX-08710	0.875	1.180	0.781	0.156	1.000	1.938	1.660	1.438	0.5	9 UNC
ABX-10010	1.000	1.333	0.917	0.146	1.000	2.063	1.876	1.625	0.7	8 UNC
ABX-10015	1.000	1.333	0.917	0.146	1.500	2.563	1.876	1.625	0.8	8 UNC
ABX-10020	1.000	1.333	0.917	0.146	2.000	3.036	1.876	1.625	0.9	8 UNC
ABX-10025	1.000	1.333	0.917	0.146	2.500	3.563	1.876	1.623	1.0	8 UNC
ABX-11211	1.125	1.500	1.000	0.188	1.125	2.313	2.093	1.813	0.9	7 UNC
ABX-12512	1.250	1.688	1.188	0.188	1.250	2.625	2.309	2.000	1.5	7 UNC
ABX-12522	1.250	1.688	1.188	0.188	2.250	3.625	2.309	2.000	1.9	7 UNC
ABX-13715	1.375	1.830	1.233	0.205	1.500	2.938	2.526	2.188	1.7	6 UNC
ABX-15015	1.500	2.000	1.375	0.188	1.500	3.063	2.742	2.375	2.2	6 UNC
ABX-15020	1.500	2.000	1.375	0.188	2.000	3.563	2.742	2.375	2.4	6 UNC
ABX-17526	1.750	2.350	1.688	0.178	2.634	4.500	3.125	2.706	5.2	5 UNC
ABX-17541	1.750	2.350	1.688	0.178	4.134	6.000	3.125	2.706	5.2	5 UNC
ABX-20023	2.000	2.690	1.938	0.218	2.345	4.500	3.594	3.125	5.5	4.5 UNC
ABX-22525	2.250	3.020	2.188	0.240	2.573	5.000	4.031	3.500	7.8	4.5 UNC
ABX-25028	2.500	3.360	2.438	0.220	2.843	5.500	4.375	3.800	10.3	4 UNC



For your convenience, there are a few simple ways to learn more or place an order for Anbo-X nuts.

Visit [Shop.CSCSteelUSA.com](http://Shop.CSCSteelUSA.com)

or call **Jean Paul Sirois** at either **(508) 230-5181** or **(508) 238-4500**.