



# THE STRENGTH OF CHOICE

---

## SUSTAINABILITY AT CSC



## Customized to Meet Your Sustainability Goals

As the leading stand-alone manufacturer of open web steel joists and decking, CSC has the distinctive advantage of fully customizing our products to help meet your project's environmental impact goals.

### **COMPREHENSIVE U.S. MILL NETWORK**

Our extensive relationships with mills across the country give us access to a multitude of steel producers and sustainable steel. All of our partners have adopted advanced technologies to reduce emissions and are continuously innovating to achieve net-zero goals.

### **REGIONALIZED LOGISTICAL REACH**

Our supply chain, powered by our domestic mill partners and CSC's production facilities, ensures logistical agility for seamless procurement and delivery. This robust infrastructure minimizes environmental impacts by maintaining proximity to project locations.

### **DESIGN EFFICIENCY**

Our expert team of project managers and licensed engineers will work closely with you to craft a personalized product plan designed to mitigate environmental effects—from strategies for efficient material usage to streamlining procurement logistics.

## Eco-Friendly U.S. Steel

Structural Steel is  
100% Recyclable.

Of construction materials,  
it leads in durability,  
resiliency, and recyclability.





In alignment with our company's core values, CSC is dedicated to being responsible stewards towards our environment, community and people.

At CSC, we strive for a holistic, integrated approach to balancing both our external and internal environments.

## Our Environment

In addition to engineering high-quality products using responsibly produced steel, we also are dedicated to minimizing waste and pollution throughout the manufacturing process and supporting sustainable construction practices.

### OUR PROCESSES

By incorporating multiple best practices within our plants, CSC is proactively striving towards a sustainable future for our industry and communities. Through methods such as source reduction, recycling, water usage management, and reducing energy consumption, we integrate sustainable processes within our operations to minimize environmental impacts while maximizing resource efficiency.

### TRANSPARENCY

CSC is equipped to provide project-specific Environmental Product Declarations (EPDs) using state-of-the-art AI-driven software. This innovation complements our existing industry-wide and plant-specific EPD offerings, giving you the power of choice to meet project specific sustainability goals.

## Our Community

Our focus on well-being is reflected within our production facilities and surrounding communities, through a commitment to maintaining the safety and wellness of our employees, customers, and neighbors alike.

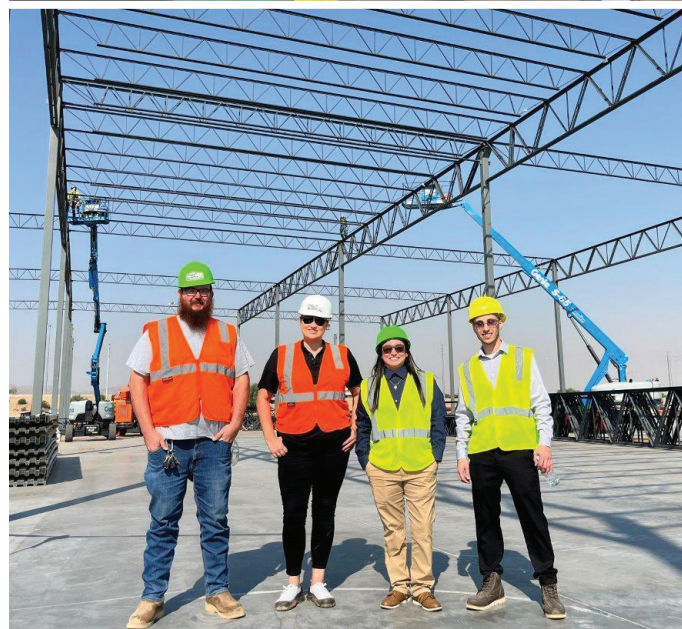
### SAFE & HEALTHY WORKPLACE

CSC is committed to providing a safe and healthy workplace that minimizes the potential adverse impacts on our teammates and the environment. We aim to foster an EHS (Environmental, Health, and Safety) culture where every employee sees EHS as a core organizational value and believes that all incidents can and must be prevented.

### SOCIAL RESPONSIBILITY

As part of our ongoing commitment to the well-being of our employees, CSC strives to enhance the welfare of our customers and the surrounding communities. Through social responsibility initiatives, including volunteering and philanthropic activities, we aim to meaningfully uphold our company values.

### INDUSTRY PARTNERS



## For More Information

Contact Grant Heinrich at [grant.heinrich@cscsteelusa.com](mailto:grant.heinrich@cscsteelusa.com).



WHEN SERVICE MATTERS

CSCSTEELUSA.COM • 833-888-0545